

# RADA

Shakespeare for Young Audiences, 2022  
Jerwood Vanbrugh Theatre

# The Tempest (1611)

by William Shakespeare

## Cast (in order of appearance)

### Prospero

Charles Entsie

### Boatswain / Trinculo / Iris

Lee Simmonds

### Alonsa

Maggie Musgrove

### Antonio

Vir Hirani

### Gonzalo

Osamudiamwen Audu

### Ferdinand / Caliban

Rawaed Asde

### Miranda

Tae Aun

### Ariel / Ceres

Louis Goodwin

### Stephano / Juno

Tiffany Gray

## Creative Team

### Director

Cressida Brown

### Designer

Anna Cierpial

### Lighting Designer

Jayden Hendricks-Kynaston

### Sound Designer

Matt Webb

### Movement Coach

Mixalis Aristidou

### Voice Coach

Deborah Garvey

### Singing coach

Mark Oldfield

### Fight Coach

Bret Yount

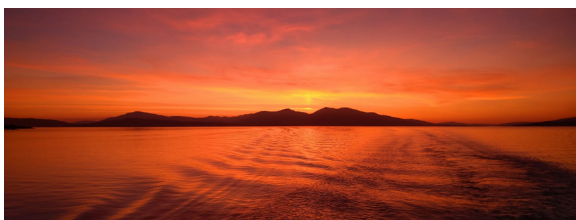
### Captioner

Jenny Skene

### Puppeteer Consultant

Sam Dutton

Content warnings: this performance contains flashing lights and mild violence.



## Elements of the Sublime

Whilst you are here, visit *Elements of the Sublime* - an immersive video installation inspired by the natural landscapes of *The Tempest* and *Twelfth Night*, created by Technical Theatre and Stage Management students. Gielgud Theatre - no ticket required.  
Evenings: 30 Nov - 7 Dec, 6.40pm - 7.15pm  
Matinees: 7 Dec, 1pm - 2pm and 3.30pm - 4pm

# Production Team

The students working on this production are on the FdA in Technical Theatre and Stage Management, the BA (Hons) in Technical Theatre and Stage Management and the PgDip in Theatre Costume.

## **Assistant Director**

Jack Clearwater  
(Studying Theatre  
Directing MFA at Birkbeck)

## **Technical Manager**

Bethany Bean

## **Production Manager**

Phil Clarke (staff)

## **Stage Manager**

Katie Glassbrook

## **Deputy Stage Manager**

Lizzie Hodge

## **ASM2s**

Caitlin MacGregor  
Sonny Trickey

## **Chief Electrician**

Matt Leventhall (staff)

## **Production Electrician**

Elizabeth Skellett

## **Lighting Programmer**

Jack Finney

## **Lighting Operator**

Jack Saltonstall

## **Lighting Crew**

Ana Chen  
Ruby Elms  
Jack Saltonstall  
Mia Swann

## **Camera Director**

Kath Morton

## **Camera Operators**

Ana Chen  
Caitlin MacGregor  
Mia Swann

## **Chief Production Sound Engineer and Production Sound Engineer**

Matt Webb

## **Sound Operators**

Zelfa El Khazen  
Mila Mussatt

## **Sound Crew**

Zelfa El Khazen  
Mila Mussatt

## **Costume Supervisor**

Katie Kelson

## **Wardrobe Assistants**

Marina Ambrosone  
Melissa Cartwright  
Helena Doughty  
Saskia Steene-Faulkner

## **Dressers**

Frances Hurst  
Naomie Mmbaga  
William Hamilton

## **Wigs, Hair and Make-up**

Keisha Banya (staff)

## **Construction**

### **Head of Department**

Teddy Stelling

## **Scenery Builders**

Frances Chappell  
Ben Davidson  
Miriam Dheva-Aksorn  
Ella Howes  
Lucy Prince

## **Scenic Art**

### **Head of Department**

Mary Sharrock

### **Scenic Artist**

Hannah Sutherland

## **Scenic Art Assistants**

Grace Farrow-Moore  
Alice Gibson  
William Hamilton  
Frances Hurst  
Naomie Mmbaga

## **Prop Maker**

Lottie Wellbeloved

## **Props Assistants**

Lara Carey  
Xilan Chen  
Rosemary Fleming

## **Stage Crew**

Elyse Brigham  
Zelfa El Khazen  
Izzy Hobby  
Mila Mussatt

## **Special thanks**

Almeida Theatre for brass bells  
Central School of Speech and Drama for the flight case  
Jack Clearwater for the roller-skates  
Lizzie Hodge for the harpy wings  
Evie Witherell for the scooter

# Biographies

## **Cressida Brown**

### **Director**

Cress was awarded the Director's Bursary from the National Theatre Studio (2007).

She is probably best known for: *Amphibians* by Steve Waters about former Olympic swimmers and staged in the empty hidden pool under the Bridewell Theatre's stage; *Walking the Tightrope* a collection of plays about freedom of expression by writers including Caryl Churchill, Timberlake Wertenbaker and Mark Ravenhill; and *Home* by Gbolahan Obisesan inspired by former residents of the Beaumont Estate and staged promenade in Beaumont's high-rise towers pre-demolition.

As a freelancer she is most proud of: *Septimus Bean and His Amazing Machine* by Adam Peck where she transformed the Unicorn Theatre foyer into a playground and *Twelfth Night* for the RSC at Guangzhou Dramatic Arts Centre which was performed in Mandarin.

For RADA she has directed *Vinegar Tom* by Caryl Churchill and *Boat Play*, which took place on the Elizabeth pleasure boat moored on the Thames.

She is currently developing a VR show for teenagers at the NT's Immersive Storytelling Studio and a *Taming of the Shrew* by Shakespeare with Mexican wrestlers.

## **Anna Cierpial**

### **Designer**

Anna is a 2020 graduate of RADA's BA (Hons) in Technical Theatre and Stage Management specialising in Scenic Art and Design, with a previous MA degree in Scenography from the Academy of Fine Arts in Gdansk, Poland. Before coming to London, she worked for a few years as an assistant to various designers at Baltic Opera in Gdansk.

Her design credits for RADA shows include: *Cathy* (set design - Gielgud Theatre), *The Philosophy Shop* (set and costume - video installation and performance in partnership with King's College), *After The Peace* (set and costume - new play for RADA Festival in the GBS Theatre) and *Dinner* (set and costume - devised piece by MA Theatre Labs in collaboration with the company).

Prior to 2020 and the first Covid lockdown she designed costumes for a preview of *12HOURS* by composer/director Catherine Kontz - an experiment on the performer's voice endurance as a part of composer's residency in Somerset House. Anna has also worked for several productions as a Scenic Artist and Head of Department.

[cierpialanna.myportfolio.com](http://cierpialanna.myportfolio.com)

## **Jayden Hendricks-Kynaston**

### **Lighting Designer**

Jayden Hendricks-Kynaston is currently in her third and final year studying for a BA (Hons) in Technical Theatre and Stage Management specialising in Lighting Programming and Lighting Design.

Jayden enjoys a wide range of theatre shows including plays, musicals as well as immersive experiences and exhibitions. Previous programming credits include: *Bold Girls* (RADA, Gielgud Theatre, June 2022), *The Wolves* (RADA, Jerwood Vanbrugh Theatre, July 2022).

Previous Production Electrician credits include: *Plagues and Tangles* (RADA, Jerwood Vanbrugh Theatre, November 2021), *The Gift* (RADA, GBS Theatre, May 2022).

Previous external work include: Backstage and Lighting work at Theatre Royal Stratford East and Lighting casual work at The Royal Opera House. *The Addams Family* (Northbrook Metropolitan College, June 2018), *Into the Woods* (Northbrook Metropolitan College, June 2019).

Future projects include Production Electrician on *Son et Lumière*, a sound and lighting show at RADA.

# RADA Supporters

Thank you to all those who donate in support of our training, our students, our creative and outreach programmes.

## Principal Partner

WarnerMedia

## President's Circle

Sir Kenneth Branagh  
Aidan Clegg  
Alan and Ros Haigh  
Tina and Martin Hughes  
Satoko Yamaga Macdonald  
Sir Stephen Waley-Cohen Bt  
Geraldine Winner  
And all those who wish to remain anonymous

## Benefactors

Zac Barratt  
Victor and Giulia Loewy  
John and Antonia Romeo  
Tanya Rose  
John Slamecka  
David Kaskel and Chris Teano

## Platinum Patrons

Will and Jo Davies  
Paul and Gill Kendrick  
Richard Lissack QC  
Andrew and Shirley Sutch  
The Lynen Family  
David and Carole Warren

## Starring Role

Russ and Linda Carr  
Trevor and Monica Coldrey  
Peter Davies  
Sally and Giles Everist  
John and Clare Grumbar  
Wendy Jardine  
Gemma Jones  
Philip Noel  
Janet Robb  
Javier Gonzalez  
Mark Stewart  
Jill Whitehouse  
Professor Michael Worton CBE

We would like to acknowledge the kind support of our RADA Leading Role, Supporting Role, Ensemble and Audience members.

## Corporate partners

### Platinum partners

Shure  
Autograph Sound  
ROBE Lighting

### Gold partners

Anna Valley Ltd  
KV2 Audio  
Notch  
Santander Universities UK  
White Light Ltd

## Silver partners

Cadac  
MDG  
Panalux UK  
Quintessentially  
Zero 88

## Bronze partners

Ambersphere  
Avolites  
Champagne Taittinger  
ETC  
Factory  
Neg Earth  
Philips Entertainment Lighting  
PRG UK  
Projected Image  
Swarovski  
TSL Lighting  
Triple E

## Event partners

AXA XL  
The May Fair Hotel  
XPS Pensions Group

## Production partners

Willis Towers Watson

## Stage Critical

### Lead Supporter

The Utley Foundation

### Stage Critical

#### Major Supporters

CHK Foundation  
The Carne Trust  
Honeymead Arts Trust  
The William and Katharine  
Longman Charitable Trust  
Anne Peck / The Schwab Fund

#### Stage Critical Supporters

Marie Barone  
Sir Peter Bazalgette  
The Broughton Foundation  
Will and Jo Davies  
Eon Productions  
Ros and Alan Haigh  
Ian and Beth Mills  
Maggie and Peter Murray-Smith  
The Rothermere Foundation  
Sotheby's  
Patrick and Anna Thomson  
The Thornton Foundation  
The Sylvia Waddilove Foundation

#### Trusts and Foundations

The Behrens Foundation  
The Cayo Foundation  
The Childhood Trust  
The Sidney E Frank Foundation

The Utley Foundation  
Watson Foundation

## Laurence Isaacson Scholarship

## Scholarship Fund

Anne Peck  
ASRADA  
The Amy Mitcheson Fund  
The Black Heart Foundation  
The Boris Karloff Foundation  
The Carne Trust  
The Charles Michael Holloway Charitable Trust  
The Clothworkers' Foundation  
The John S Cohen Foundation  
The David Family Foundation  
The Desmond Gill Memorial Award  
The D'Oyly Carte Charitable Trust  
The Gilbert and Eileen Edgar Foundation  
The Grahame Norris Memorial Fund  
The Harold Hyam Wingate Foundation  
The Sir John Gielgud Charitable Trust Bursary  
The Josephine Hart Poetry Foundation  
The Laurence Olivier Award  
The Leverhulme Trust  
The Lilian Baylis Award  
The Lionel Bart Foundation  
Trish Montemuro Bursary  
The Rayne Foundation  
Santander Universities UK  
Sophie's Silver Lining Fund  
The South Square Trust  
The Stanley Picker Charitable Trust  
The Wall Trust  
Warner Bros. Entertainment  
The William and Frances Branagh Memorial Fund  
The William and Katherine Longman Trust

## Legacy Pledges

Charles Barton  
Marcus and Susie Bicknell  
Philip Carne MBE  
Kenneth Cohen  
Sarah Cook  
Mike Cooper  
Craig Crosbie  
Alastair Davidson  
Sheila Dickinson  
Maureen Elton  
Sarah Evans  
Anthony Gardner  
Don Gaskell  
Stephen Greif

Guy Henry  
Robin Houston  
David Hunt  
Vivian Munn  
Nigel Pivaro  
Fiona Shaw CBE  
Michael Simkins  
John St Brioc Hooper  
Felicity Trew  
Bruce Wall  
Camilla Whitworth-Jones  
Anonymous

## Awards in Perpetuity

Constance Roberts  
Dame Irene Vanbrugh  
Debbie Cronshaw  
Eleanore Bryan  
Elizabeth Sebok  
Eunice Black  
The Friends of RADA  
Garth Wilton  
- dedicated to Ann Wilton  
Gillian Wilson  
John Thaw  
Jess Sleath  
Kate Dreyer Memorial  
Keely Donovan  
Keith Waterhouse  
Lady Pilkington  
Lionel Gamlin  
Lord and Lady Attenborough  
Marianne Pearce  
Mary Higgins  
Mary Morris  
Max Reinhardt  
Peter and Sheila Bennett  
Peter Barkworth  
RADA Associates  
The Rayne Foundation  
The Searle Scholarship  
Sir John Gielgud Bursary  
St Clair Bayfield  
The Sylvia London Student Bursary  
WCRS Student Bursary

Registered Charity No. 312819  
Patron: Her Majesty The Queen



@RADA\_London



RoyalAcademyOfDramaticArt



royalacademyofdramaticart

## BA (Hons) in Acting



Rawaed  
Asde



Osamudiamwen  
Audu



David  
Bankole



Melanie-Joyce  
Bermudez



Stefan  
Brennan-Healy



Charles  
Entsie



Tae  
Eun



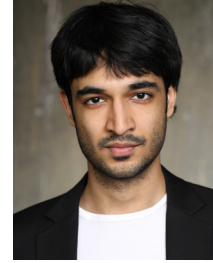
Patrick  
Fusco



Louis  
Goodwin



Tiffany  
Gray



Vir  
Hirani



Adrian Paul  
Jeyasingham



Maya  
Loveday



Charlotte  
Luxton



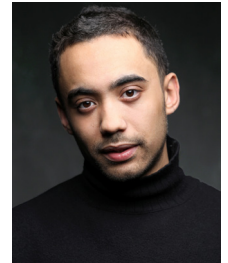
Maggie  
Musgrove



Kitty  
Reed



Jessica  
Revell



Lee  
Simmonds

These are the 2023 graduates of our three year BA (Hons) in Acting. Their profiles can be found at [rada.ac.uk/profiles](http://rada.ac.uk/profiles) and you can see them in our student productions throughout this academic year. We are eager for our graduates to gain employment but failing to complete their final year of training may prevent them from gaining their degree and can hinder their long-term

development in the profession. Therefore, students are not permitted to sign with an agent or artists' management before Friday 24 March 2023. Any offers of employment or representation should be directed to Lucy Skillbeck (Director of Actor Training) via [actors@rada.ac.uk](mailto:actors@rada.ac.uk) or 020 7636 7076.



### Support RADA's Big Give Christmas Challenge

Donate to the Big Give and support Stage Critical – our urgent fundraising campaign to recover, rebuild and support our students following the pandemic. Donations made until 6 December will be doubled – one donation, twice the impact!

Donate now to support the next generation of world-class actors, technicians, stage managers and designers, ensuring the dramatic arts are made by and for everyone. Thank you.

Find out more: [donate.thebiggive.org.uk](http://donate.thebiggive.org.uk)

Headshots by Charlie Carter  
[charliecarter.com](http://charliecarter.com)

@RADA\_London  
 RoyalAcademyOfDramaticArt  
 royalacademyofdramaticart