

# RADA

Summer 2, 2022

GBS Theatre

# Curse of the Starving Class (1977)

by Sam Shepard

## Cast (in order of appearance)

### Wesley

Sam Mitchell

### Ella

Elyssia Roe

### Emma

Chloe Claudel

### Taylor

Tawana Dingembira

### Weston

Keaton Guimarães-Tolley

### Ellis

Marcus Amaglo

### Malcolm / Slater

Hughie O'Donnell

### Emerson

Abiola Owokoniran

## Creative Team

### Director

Philip Dart

### Designer

Lizzy Leech

### Lighting Designer

Dylan Mulholland

### Sound Designer

Dylan Marsh

### Movement and Intimacy Coach

Angela Gasparetto

### Voice and Dialect Coach

Joe Windley

Content warnings: this production contains alcoholism, poverty, explicit language, mentions of death (one character dies off stage), mentions of firearms, firearms on stage (not fired), mentions of harm to animals (slaughtering, not part of the action).

# Production Team

The students working on this production are on the FdA in Technical Theatre and Stage Management, the BA (Hons) in Technical Theatre and Stage Management and the PgDip in Theatre Costume.

## **Technical Manager**

Ted Latus

## **Production Manager**

Alex Firth (staff)

## **Stage Manager**

Sarah Back

## **Deputy Stage Manager**

Thomas Fielding

## **Assistant Stage Manager**

**/ Book Cover**

Sam Marshall

## **Assistant Stage Manager**

Abbey Lye-Forster

## **Chief Electrician**

Harry Leng-Bloodworth

## **Production Electrician**

Ethan Hopper

## **Lighting Programmer**

Dom Kosieradzka

## **Production Sound Engineer**

Jim Armstrong (professional)

## **Sound Operator**

Matt Webb

## **Broadcast**

Ted Latus

Kath Morton

Evie Witherell

## **Costume Supervisors**

**/ Dressers**

Simson Kandiah

Katie Kelson

## **Wardrobe Assistant**

Jade Littlechild

## **Wigs, Hair and Make-up**

Keisha Banya (staff)

## **Construction Project Managers and Scenery Builders**

Caoimhe Canning

Chaz Griffith-McCann

Kath Morton

Mary Sharrock

Teddy Stelling

## **Scenic Art Head of Department**

Niamh Birkett

## **Scenic Art Assistants**

Theo Corrance

Michael Enamejewa

Rachel Leveney

Tiffany Yu

## **Props Maker**

Lizzie Hodge

## **Props Assistants**

Lucy Leach

Charlotte Wellbeloved

Martin Wright

# Biographies

## Sam Shepard

Writer

Sam Shepard (1943-2017) was an American actor, playwright, author, screenwriter and director. He wrote over fifty plays winning many accolades including ten Obie Awards, a Pulitzer Prize for Drama for his play *Buried Child* and was described by the New York magazine as “the greatest American playwright of his generation”. His plays include: *Icarus’s Mother*, *La Turista*, *The Tooth of Crime*, *Geography of a Horse Dreamer*, *Action*, *Angel City*, *Suicide in B Flat*, *Curse of the Starving Class*, *Buried Child*, *Tongues*, *True West*, *Fool for Love*, *A Lie of the Mind*, *Simpatico*, *The God of Hell* and *Kicking a Dead Horse*.

## Philip Dart

Director

After graduating from Hull University, Philip began his professional directing career at the Soho Poly Theatre in London.

His Artistic Directorship of Kent-based Channel Theatre Company began with two critically acclaimed UK touring premieres: Larry Kramer’s *The Normal Heart* and Anthony Minghella’s *Made in Bangkok*. He went on to direct many more Arts Council funded national touring productions, including *The Woman in Black* (UK touring premiere); *The Haunted Hotel* (his own adaptation of Wilkie Collins’ gothic novel) and Tom McGrath’s *Laurel and Hardy* (co-produced with Buxton Opera House).

During the oos, Philip established a flagship arts centre in Margate, Kent, with support from the EU and Arts Council Lottery funding. From here he set up Chalkfoot Theatre Arts, which served small-scale theatres and rural community venues in Kent, Sussex and London. Productions for Chalkfoot included *Running For Glory* (based on events at the 1924 Paris Olympics) and an innovative staging of Erskine Childers’ Edwardian novel *The Riddle of the Sands* at Jermyn Street Theatre (which earned him nominations for Best Director and Best Production in the Off West End awards).

Philip frequently works outside the UK. He has directed for the English Theatre of Hamburg and regularly works for Vienna’s English Theatre. [www.scenethreecreative.co.uk](http://www.scenethreecreative.co.uk).

## Lizzy Leech

Designer

Lizzy trained at Bristol Old Vic Theatre School and studied English Literature at Warwick University. Recent designs include: *The Secret Garden* (North East and Cumbria tour), *Cyprus Avenue* (RADA), *The Golden Fleece* (Sheffield Crucible), *60 Miles by Road or Rail* (Royal & Derngate Northampton), *A Girl In School Uniform* (Leeds Playhouse and tour), *Joan of Leeds and Antigone* (New Diorama Theatre), *Spiderfly* (Theatre 503), *Hansel and Gretel*, *Fairytale Detectives* (Theatr Clwyd), *The Merchant of Venice* (Stafford Festival Shakespeare), *The Butterfly Lion* (The Barn Theatre, Cirencester), *Songlines* (HighTide Theatre, UK tour), *The Leftovers* (Leicester Curve and UK tour), *A Table Tennis Play* (Walrus Theatre and Theatre Royal Plymouth), *Alby the Penguin Saves Christmas* (Oxford Playhouse), *To My Younger Self* (Synergy Theatre), *Love for Love* and *The Heresy of Love* (Bristol Old Vic).

As Assistant Designer projects include: *All of Us* (National Theatre), *Macbeth* (Shakespeare’s Globe), *La Boheme* (Gothenburg Opera House), *Pericles* (National Theatre), *Beginning* (National Theatre and West End), *Macbeth* (Royal Shakespeare Company) *A Tale of Two Cities* and *Oliver Twist* (Regents Park Open Air Theatre). [lizzyleech.com](http://lizzyleech.com)

## Dylan Mulholland

Lighting Designer

Dylan (he/him) is a second year student on the RADA FdA Technical Theatre and Stage Management course specialising in lighting design and production lighting. This year at RADA, Dylan has designed *Flat 11B* (RADA’s immersive escape room) and before Christmas designed and programmed the MA Theatre Lab Manifestos, a collection of devised short pieces. He has been chief electrician on multiple occasions and programmed *When the Rain Stops Falling* in early spring. Dylan has also been on placement at Theatre By The Lake where he worked as a member of the lighting department.

## Dylan Marsh

Sound Designer

A second time theatre sound designer, Dylan has spent the past few months between his studies working as a sound and video engineer at the Young Vic theatre. Coming back to RADA for his final show this year, *Curse of the Starving Class* has been a fantastic lesson in working with the subtlety of sound.

# RADA Supporters

Thank you to all those who donate in support of our training, our students, our creative and outreach programmes.

## **Principal Partner**

Warner Bros. Entertainment

## **President's Circle**

Sir Kenneth Branagh

Aidan Clegg

Alan and Ros Haigh

Tina and Martin Hughes

Reginald and Satoko Macdonald

Sir Stephen Waley-Cohen Bt

Geraldine Winner

And all those who wish to remain anonymous

## **Benefactors**

Victor and Giulia Loewy

Tanya Rose

John Slamecka

David Kaskel and Chris Teano

Patrick and Anna Thomson

## **Platinum Patrons**

Zac Barratt

Will and Jo Davies

Paul and Gill Kendrick

Richard Lissack QC

John and Antonia Romeo

Andrew and Shirley Sutch

The Lynen Family

David and Carole Warren

## **Starring Role**

Trevor and Monica Coldrey

John and Clare Grumbar

Wendy Jardine

Philip Noel

Janet Robb

Javier Gonzalez

Mark Stewart

Jill Whitehouse

Professor Michael Worton CBE

We would like to acknowledge the kind support of our RADA Leading Role, Supporting Role, Ensemble and Audience members.

## **Corporate partners**

### **Platinum partners**

Shure

Autograph Sound

ROBE Lighting

## **Gold partners**

Anna Valley Ltd

KV2 Audio

Notch

Santander Universities UK

White Light Ltd

## **Silver partners**

Cadac

MDG

Panalux UK

Quintessentially

Zero 88

## **Bronze partners**

Ambersphere

Avolites

Champagne Taittinger

ETC

Factory

Neg Earth

Philips Entertainment Lighting

PRG UK

Projected Image

Swarovski

TSL Lighting

Triple E

## **Event partners**

AXA XL

The May Fair Hotel

XPS Pensions Group

## **Production partners**

Willis Towers Watson

## **Stage Critical**

### **Lead Supporter**

The Utley Foundation

### **Major Supporters**

CHK Foundation

The Carne Trust

Honeymead Arts Trust

The William and Katharine Longman

Charitable Trust

Anne Peck / The Schwab Fund

### **Supporters**

Will and Jo Davies

Ros and Alan Haigh

The Broughton Foundation

The Rothermere Foundation

The Thornton Foundation

Sir Peter Bazalgette

Beth and Ian Mills

Maggie and Peter Murray-Smith

The Sylvia Waddilove Foundation

# RADA Supporters continued

## **Trusts and Foundations**

The Behrens Foundation  
The Cayo Foundation  
The Childhood Trust  
CHK Foundation  
The Utley Foundation  
Watson Foundation

## **Scholarship Fund**

Anne Peck  
ASRADA  
The Amy Mitcheson Fund  
The Black Heart Foundation  
The Boris Karloff Foundation  
The Carne Trust  
The Charles Michael Holloway Charitable Trust  
The Clothworkers' Foundation  
The Desmond Gill Memorial Award  
The D'Oyly Carte Charitable Trust  
The Gilbert and Eileen Edgar Foundation  
The Grahame Norris Memorial Fund  
The Harold Hyam Wingate Foundation  
The Sir John Gielgud Charitable Trust Bursary  
The Josephine Hart Poetry Foundation  
The Laurence Olivier Award  
The Leverhulme Trust  
The Lilian Baylis Award  
The Lionel Bart Foundation  
The Rayne Foundation  
Santander Universities UK  
Sophie's Silver Lining Fund  
The South Square Trust  
The Stanley Picker Charitable Trust  
The Wall Trust  
Warner Bros. Entertainment  
The William and Frances Branagh Memorial Fund  
The William and Katherine Longman Trust

## **Legacy Pledges**

Charles Barton  
Marcus and Susie Bicknell  
Philip Carne MBE  
Kenneth Cohen  
Sarah Cook  
Mike Cooper  
Craig Crosbie  
Alastair Davidson  
Sheila Dickinson  
Maureen Elton

Sarah Evans  
Anthony Gardner  
Don Gaskell  
Stephen Greif  
Guy Henry  
Robin Houston  
David Hunt  
Vivian Munn  
Nigel Pivaro  
Elizabeth Sebok  
Fiona Shaw CBE  
Michael Simkins  
John St Brioc Hooper  
Felicity Trew  
Bruce Wall  
Camilla Whitworth-Jones  
Anonymous

## **Awards in Perpetuity**

Constance Roberts  
Dame Irene Vanbrugh  
Debbie Cronshaw  
Eleanore Bryan  
Eunice Black  
The Friends of RADA  
Garth Wilton - dedicated to Ann Wilton  
Gillian Wilson  
John Thaw  
Kate Dreyer Memorial  
Keely Donovan  
Keith Waterhouse  
Lady Pilkington  
Lionel Gamlin  
Lord and Lady Attenborough  
Marianne Pearce  
Mary Higgins  
Mary Morris  
Max Reinhardt  
Peter and Sheila Bennett  
Peter Barkworth  
RADA Associates  
The Rayne Foundation  
The Searle Scholarship  
Sir John Gielgud Bursary  
St Clair Bayfield  
The Sylvia London Student Bursary  
WCRS Student Bursary

 @RADA\_London

 RoyalAcademyOfDramaticArt

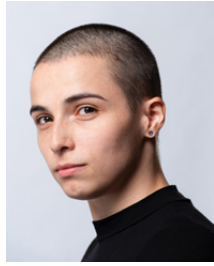
 royalacademyofdramaticart



# BA (Hons) in Acting



Deborah  
Alli



Beth  
Alsbury



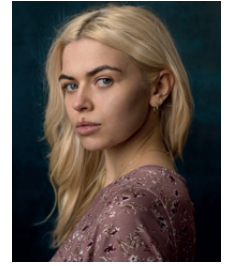
Marcus  
Amaglo



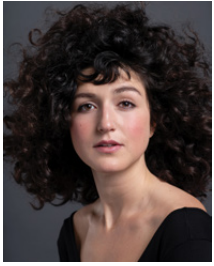
Lynton  
Appleton



Phoebe  
Campbell



Mila  
Carter



Chloe  
Claudel



Estelle  
Cousins



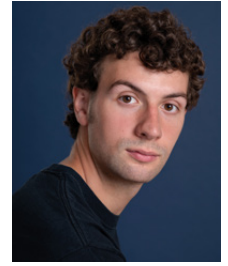
Tawana  
Dingembira



Patrick  
Fleming



Sky  
Frances



Keaton  
Guimarães-Tolley



Max  
Jackson



Lucy  
Jamieson



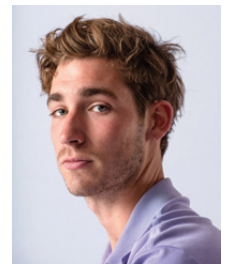
Kerill  
Kelly



Esmé  
Kingdom



Lizzie  
Macgregor Mason



Sam  
Mitchell



Katarina  
Novkovic



Hughie  
O'Donnell



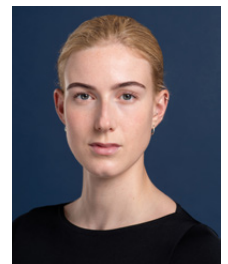
Abiola  
Owokoniran



Rowan  
Robinson



Elyssia  
Roe



Anna  
Tolstoy



Ayla  
Wheatley



Perry  
Williams

Headshots by Clare Park  
(Mila Carter's by Andy McCredie)