

Lab Works 2

by MA Theatre Lab

Plastic Flowers

created and performed by Joshua Aiu

For the Sake of Now

created and performed by Ethan Bareham, Jack Clark, Georgia Gabrielides and Lucy Laverty

LIBERATING: She Dances in Chains

Created and performed by Xiaoyao Luo 罗逍遥

Nelia

created and performed by Inge Crafford-Lazarus

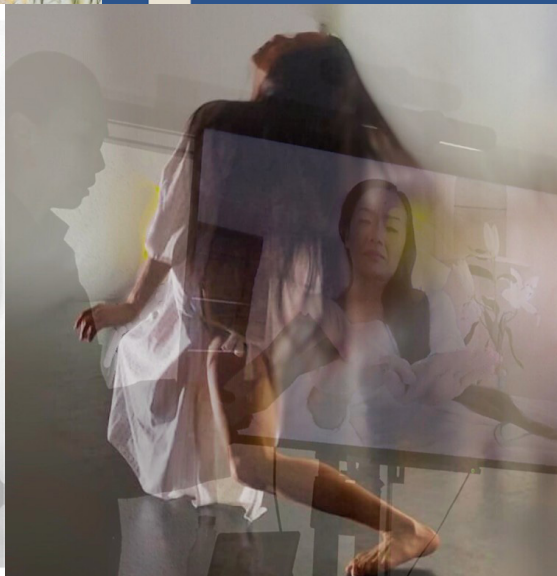
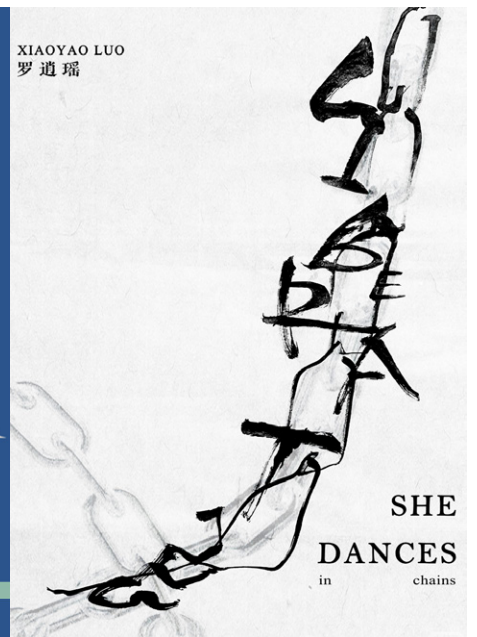
Yasmin

created and performed by Sook Kuan Tang

as above, so below

created and performed by Pat Dynowska and Corinne Soland

RADA



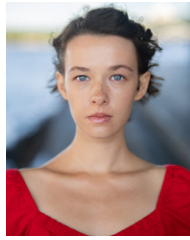
MA Theatre Lab 2025



Joshua
Aiu



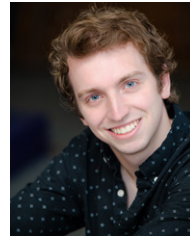
Ethan
Bareham



Oleksandra
Barstok



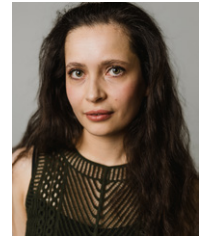
Jonah
Buksbaum



Jack
Clark



Emma Yvette
Conlon



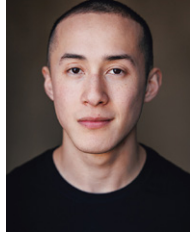
Inge
Crafford-Lazarus



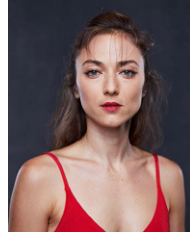
Montserrat
Cuellar Mestas



Pat
Dynowska



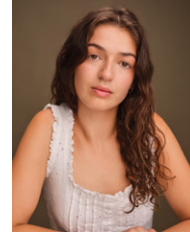
Will Choy
Edelson



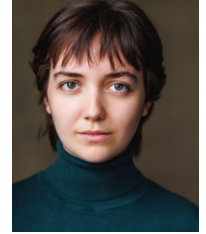
Olga
Fedorishcheva



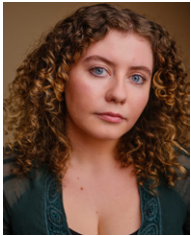
Marianna
Fornari



Georgia
Gabrielides



Tara
Kitson



Lucy
Laverty



Xiaoyao
Luo



Nash
Nørgaard



Corinne
Soland



Sook Kuan
Tang



Scan the QR
code to see the
MA Theatre Lab
student profiles.

Creative and Production Team

Creative Mentors for Lab Works: Ramon Ayres, Eyglo Belafonte, Emma Clark, Gemma Crooks, Chiara D'Anna, Tim Dodd, Lesley Ewen, Simon Gleave, Khairul Kamsani, Peta Lily, Ian Morgan, Dan Sherer, Christopher Sivertsen and PJ Stanley

Producer and Creative Mentor: Ian Morgan (Course Leader MA Theatre Lab)

Lighting Designer Matt Leventhall

Associate Lighting Designer Lara Fleming

Sound Designers The company with support from Clara McDevitt and Lydia Hervey

Sound Facilitators Clara McDevitt and Lydia Hervey
Production Electricians Kit Jamieson, Leanne Mitchell
Vocal Support Suzanne West
Singing Support: Mark Oldfield
Stage Manager Amelia Barrett
Deputy Stage Managers Aino Teppo, Rachel Wilkinson
Costume Supervisor Sophie Reshad
Special thanks to Jacob Henney

Winter Cabaret 4 December 2024, 7pm



Join us for RADA's Winter Cabaret 2025, a sparkling evening of music, performance and celebration, hosted by RADA alumni Tanya Moodie and directed by Nona Shepphard.

Expect to see many familiar RADA faces fill the stage, with work celebrating this joyous time of year.

Join us as we raise a final toast to 2025 and to all those who make RADA's work possible.

Scan the QR code for more information and to book or contact development@rada.ac.uk



RADA Big Give Christmas Challenge
Support the next generation of creative talent and become a part of RADA's extraordinary legacy.

Donate between 2–9 December 2025, and your gift will go twice as far — every pound will be doubled.

Scan the QR code or email development@rada.ac.uk



Lab Works 2

Lab Works is a festival of new theatre and performance 'works in progress', created by the students over the last month with support from our Creative Mentors. Performances developed out of Lab Works have gone on to appear in theatres and festivals around the world.



Plastic Flowers

created and performed by Joshua Aiu

In a world demanding "good vibes only," what is the cost of perfection?

Plastic Flowers is a gripping solo show that puts our curated lives under a microscope. We meet LEO, a man who appears perfectly put-together in a chic restaurant. His smile may be practiced, but his charm feels hollow, and his entire life seems like a performance. Beneath his flawless exterior, a frantic, silent anxiety is building. This play is an unflinching look at the pressure to perform happiness and the agonizing gap between a flawless public self and the reality hidden underneath.

Content warnings: loud noises.



For the sake of Now

created and performed by Ethan Bareham, Jack Clark, Georgia Gabrielides, Lucy Laverty

Welcome aboard your luxury cruise – and curated farewell journey!

Adrift in a floating world of pleasure, there is no return – only discovery. Every sunrise invites reflection and every tide carries a memory as passengers confront their fleeting time. An unforgettable voyage evolves into a meditation on loss, legacy, love, and the quiet grief that lingers long after we're gone.

Content warnings: references to suicide, miscarriage, terminal illness, death.



LIBERATING:

She Dances in Chains

created and performed by Xiaoyao Luo 罗道瑶

Trained to dance in chains, a body forgets how to move once unshackled. A solo about discipline, masking and the paradox of agency within constraint. It sketches a world of internalised surveillance and self-regulation, where external command slides into voluntary compliance and performance hardens into habit. With chains, masks and the body as its image field, it asks: when conduct is measured from within, what might freedom be? She dances in chains. She chooses to. Does she?

Content warnings: simulated restraint with metal chains; repetitive sounds; cultural death imagery.

More immediately, the group will have the chance develop these performances over the next few months for the Lab Re-Works alumni residency in July at the Notting Hill Coronet Theatre. So please do offer some feedback, if you get the chance, after the show.



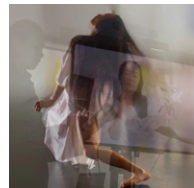
Nelia

created and performed by Inge Crafford-Lazarus
With music by George Gershwin and Béla Bartók

Her name is Nelia and she lives in a circle.

Bad things have happened here, but she wouldn't feel safe anywhere else. She is afraid of corners among other things. She doesn't need much: just a few drops of rain and an apple a day. Apples might be her most favourite thing, despite the fact that they are not yellow. She's partial to yellow. Her least favourite thing is the sound of the Hadada ibises... no, the dark... no, definitely the ibises, but also the dark, what dreams may come, and the thought of not being enough.

Content warnings: themes of mental illness, images of physical restraint, loud noises, flickering light.



Yasmin

created and performed by Sook Kuan Tang

A glimpse into Yasmin, an early chapter of a solo performance exploring motherhood, critical illness, and the fragile truths

between life and loss. Through laughter, tender reflection and moments of luminosity, we follow a woman in an interfaith marriage as she meets her body, her choices and the moral weight of decisions at life's edge.

Blurring boundaries between performer and character, the piece invites the audience into a delicate space—where presence, courage, and the fleeting beauty of being fully alive quietly unfold...

How do we choose between love and letting go?

Content warnings: contains a high pitched sound, themes of critical illness, family conflict, and emotionally intense moments that may be sensitive for some viewers.



as above, so below

created and performed by Pat Dynowska and Corinne Soland

welcome to the alchemical workshop where souls are distilled and spirits transmuted. two are hard at work blending oil, purifying salt and balancing water – until they begin to remember things left over in between.

Content warnings: explicit language, depiction of mutilated human body parts.

RADA Supporters

Thank you to all those who donate in support of our training, our students, our creative and outreach programmes.

Major Supporters

Academy Circle

Charles Holloway OBE
Anne Peck
Anonymous

Presidents Circle

Richard Bernstein
Cecilia and Stuart Boyd
Sir Kenneth Branagh
Alan and Ros Haigh
Tania Seary and Chris Lynch
Satoko Yamaga Macdonald
Anonymous

RADA Ensemble

Empower Patrons

Juan Corbella and Howard Pfabe
Richard Lissack KC
Robert Lister

Collaborate Patrons

Zac and Lucy Barratt
Rosalind Clayton and Martin Higginson
Aidan Clegg
Peter Davies
Gemma Jones
Gerald Kidd
Maxine Peake
John and Antonia Romeo
Anonymous

Innovate Patrons

Desmond and Madeleine Cohen
Graham Downie
Jennifer Hirsch
Uche Mere
Marcus Ryder
Caroline Spicer
David Warren
Jill Whitehouse

We also thank our generous RADA Ensemble Amplify Patrons and Members, as well as those supporters who prefer to remain anonymous.

Corporate Donors

Warner Bros. Discovery
Crystal Amber

Industry Pathway Partners

Enable

Entedi
Onsight
Panasonic
Neg Earth
Warner Bros Discovery
Sotheby's London

Evolve

MDG
Akta Photography
Champagne Taittinger

Embrace

White Light Ltd
Pearl & Dean
Triple E Track systems

Create

Ambersphere

Inspire

Le Mark Group Ltd

In-Kind Partners

Anna Valley Ltd
Autograph Sound
Cadac
ETC
Factory
KV2 Audio
Notch
Panalux UK
Projected Image
Shure
Signify Lighting
TSL Lighting

Trusts and Foundations:

The Austin and Hope Pilkington Trust
Cockayne - Grants for the Arts: a donor advised fund held at The London Community Foundation
The Behrens Foundation
Backstage Trust
The Black Heart Foundation
CHK Foundation
The Josephine Hart Poetry Foundation
The Kirby Laing Foundation
The Noël Coward Foundation
The Sidney E Frank Foundation
The Robert Gavron Charitable Trust

Laurence Isaacson Scholarship

Michael Blakemore Scholarship

Scholarship Fund

The Boris Karloff Charitable Foundation
The Carne Trust
The Clothworkers' Foundation
The John S Cohen Foundation
The David Cunliffe Scholarship
The Desmond Gill Memorial Award
The D'Oyly Carte Charitable Trust
The Gilbert and Eileen Edgar Foundation
ITV Tony Warren Bursary
The Josephine Hart Poetry Foundation
The Laurence Olivier Bursary

The Leverhulme Trust
The Lilian Baylis Award
The Lionel Bart Charitable Foundation
The Nick Lewis Memorial Trust
The Rigby Foundation
The Dame Rosemary Squire Bursary
The Sir John Gielgud Charitable Trust Bursary
Sophie's Silver Lining Fund
The South Square Trust
Trish Montemuro Bursary
The Wall Trust
The William and Frances Branagh Memorial Fund

In Memoriam

Gifts made in honour of the following people:
Michael Blakemore

Notified Legacies

Charles Barton
Marcus and Susie Bicknell
Caroline Burt
Philip Carne MBE
Kenneth Cohen
Sarah Cook
Mike Cooper
Craig Crosbie
Sheila Dickinson
Maureen Elton
Sarah Evans
Don Gaskell
Guy Henry
Richard Hicks
Robin Houston
David Hunt
Nigel Pivaro
Fiona Shaw CBE
Joe Solomon
Duncan Sparkes
Felicity Trew
Bruce Wall
Camilla Whitworth-Jones
And all those who wish to remain anonymous.

Realised Legacies

Margaret Burkinshaw
Renée Cooper
Alastair Davidson
Fenella Fielding
Anthony Gardner
Iris Evelyn Gillett
James Hamilton
Laurence Isaacson
Robert Kaliban
Charles Kay
Sheila Manning
Guy Pursey
Ann Richardson
Alan Rickman
Griff Thomas
Roma Cribbes Whitney

Awards in Perpetuity

Constance Roberts
Dame Irene Vanbrugh
Debbie Cronshaw
Eleanore Bryan
Elizabeth Sebok (Lead Voice Tutor)
Eunice Black
The Friends of RADA
Garth Wilton - dedicated to Ann Wilton
Gillian Wilson
John Thaw
Jess Sleath
Kate Dreyer Memorial
Keely Donovan
Keith Waterhouse
Lady Pilkington
Lionel Gamlin
Lord and Lady Attenborough
Marianne Pearce
Mary Higgins
Mary Morris
Max Reinhardt
Peter and Sheila Bennett
Peter Barkworth
RADA Associates
The Rayne Foundation
The Searle Scholarship
St Clair Bayfield
The Sylvia London Student Bursary
WCRS Student Bursary

We would like to also thank those generous supporters who wish to remain anonymous.





Join RADA Ensemble

Enjoy exclusive opportunities to get closer to our work. Your support helps us continue to train and nurture the next generation of creative talent. Join us at rada.ac.uk/rada-ensemble or scan the QR code.

Registered Charity No. 312819

Patron: His Majesty King Charles III

 **RoyalAcademyOfDramaticArt**
 **royalacademyofdramaticart**