

# Lab Works 1

by MA Theatre Lab

## Vestiges of a dry creek

created and performed by Montserrat Cuellar Mestas

## Tomatoes

created and performed by Oleksandra Barstok

## \*(scenes from a falling world)

created and performed by Jonah Buksbaum, Emma Yvette Conlon, Will Choy Edelson and Tara Kitson

## Girl Interrupted

created and performed by Olga Fedorishcheva

## A Horse called Bull

created and performed by Nash Nørgaard

## InTouch

created by Marianna Fornari, performed by Joshua Aiu, Ethan Bareham, Oleksandra Barstok, Jonah Buksbaum, Jack Clark, Emma Yvette Conlon, Marianna Fornari, Georgia Gabrielides, Tara Kitson, Lucy Laverty, Xiaoyao Luo and Sook Kuan Tang

# RADA



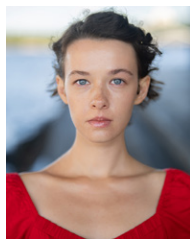
## MA Theatre Lab 2025



Joshua  
Aiu



Ethan  
Bareham



Oleksandra  
Barstok



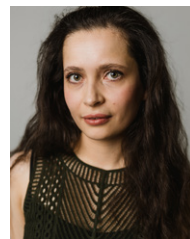
Jonah  
Buksbaum



Jack  
Clark



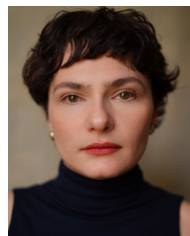
Emma Yvette  
Conlon



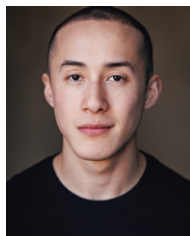
Inge  
Crafford-Lazarus



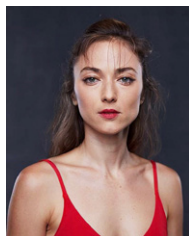
Montserrat  
Cuellar Mestas



Pat  
Dynowska



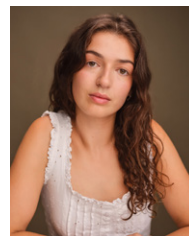
Will Choy  
Edelson



Olga  
Fedorishcheva



Marianna  
Fornari



Georgia  
Gabrielides



Tara  
Kitson



Lucy  
Laverty



Xiaoyao  
Luo



Nash  
Nørgaard



Corinne  
Soland



Sook Kuan  
Tang



Scan the QR  
code to see the  
MA Theatre Lab  
student profiles.

## Creative and Production Team

**Creative Mentors for Lab Works:** Ramon Ayres, Eyglo Belafonte, Emma Clark, Gemma Crooks, Chiara D'Anna, Tim Dodd, Lesley Ewen, Simon Gleave, Khairul Kamsani, Peta Lily, Ian Morgan, Dan Sherer, Christopher Sivertsen and PJ Stanley

**Producer and Creative Mentor:** Ian Morgan (Course Leader MA Theatre Lab)

**Lighting Designer** Matt Leventhall

**Associate Lighting Designer** Lara Fleming

**Sound Designers** The company with support from Clara McDevitt and Lydia Hervey

**Sound Facilitators** Clara McDevitt and Lydia Hervey  
**Production Electricians** Kit Jamieson, Leanne Mitchell  
**Vocal Support** Suzanne West  
**Singing Support:** Mark Oldfield  
**Stage Manager** Amelia Barrett  
**Deputy Stage Managers** Aino Teppo, Rachel Wilkinson  
**Costume Supervisor** Sophie Reshad  
**Special thanks to** Jacob Henney

## Winter Cabaret 4 December 2024, 7pm



Join us for RADA's Winter Cabaret 2025, a sparkling evening of music, performance and celebration, hosted by RADA alumni Tanya Moodie and directed by Nona Shepphard.

Expect to see many familiar RADA faces fill the stage, with work celebrating this joyous time of year.

Join us as we raise a final toast to 2025 and to all those who make RADA's work possible.

Scan the QR code for more information and to book or contact [development@rada.ac.uk](mailto:development@rada.ac.uk)



**RADA Big Give Christmas Challenge**  
Support the next generation of creative talent and become a part of RADA's extraordinary legacy.

Donate between 2–9 December 2025, and your gift will go twice as far — every pound will be doubled.

Scan the QR code or email [development@rada.ac.uk](mailto:development@rada.ac.uk)





# Lab Works 1

Lab Works is a festival of new theatre and performance 'works in progress', created by the students over the last month with support from our Creative Mentors. Performances developed out of Lab Works have gone on to appear in theatres and festivals around the world.



## Vestiges of a dry creek

created and performed by  
Montserrat Cuellar Mestas  
Photography by Itzel Picazo  
Sound design by Rita Horta

A phantasmagorical journey towards a place of origin: Jalisco, Mexico. Landscapes of a past unknown are reimagined and intertwined with the present: a girl walking back home.

Special thanks to the Grodman Legacy scholarship programme for the promotion of artists from Jalisco.



## Tomatoes

created and performed by  
Oleksandra Barstok

A tomato hanging on a stem. Let's say you pick a tomato from the stem. Now you have the fruit in your hands, and there is a small mark from the stem on it - "the core of the tomato".

Research into the subconscious, dreams, images.

Development of one of the characters for a future performance.  
"happiness through survival"

**Content warnings:** loud sound, abstract violence.



## \*(scenes from a falling world

created and performed by  
Jonah Buksbaum, Emma Yvette Conlon, Will Choy Edelson  
and Tara Kitson

The world is falling. The stars are leaving, the leaves are working overtime. Lovers cling to each other, families break apart, and humanity searches for meaning. How do we react when we fall? And what do we do on the way down?

Lift coordinator: Inês Drumond

**Content warnings:** themes of aging and death, depiction of physical injury, loud noises.

More immediately, the group will have the chance develop these performances over the next few months for the Lab Re-Works alumni residency in July at the Notting Hill Coronet Theatre. So please do offer some feedback, if you get the chance, after the show.



## Girl Interrupted

created and performed by  
Olga Fedorishcheva

"How life gets fragmented and put together. Somehow. Somewhat."

Special thanks to Ian Morgan, Lesley Ewen, Dan Sherer, Gemma Crooks for your invaluable input; to my new cohort for being awesome in every way; Rebecca Nemzer for making this program possible, and life long love and support; to John for your continual support; huge thank you to Ali for lovingly dealing with the Night Fury on a daily basis; Steve for taking care of our jungle family; my dad for everything; and always always my iridescent mom.

**Content warnings:** flashing lights, grief, curse words, graphic description of wars.

All factual information used in the show is quoted from Human Rights Watch, Amnesty International and OSCE official documents.



## A Horse called Bull

created and performed by Nash Nørgaard

Sacrifices come in many forms. For some, they are large, grand, and oh so romantic. For others, it is the price you pay to be part of a system.

To bore smooth the rough edges as to fit in and stay on the treadmill. In this latter example, answer me this, how much are you willing to cut off? And is there really a difference between sacrifice and betrayal?

**Content warnings:** flashing lights, simulated gun fire, animal cruelty.



## InTouch

created by Marianna Fornari  
Performed by Joshua Aiu, Ethan Bareham, Oleksandra Barstok, Jonah Buksbaum, Jack Clark, Emma Yvette Conlon, Marianna Fornari, Georgia Gabrielides, Tara Kitson,

Lucy Laverty, Xiaoyao Luo, Sook Kuan Tang

The show explores the themes of connection and the meaning of life, revealed through togetherness and touch. The protagonists on stage enter the world with curiosity and wonder as they discover the power of sensations, feelings, and events. The possibility of feeling (sensations and emotions) is often taken for granted, and in rediscovering it lies the meaning of life.

As the audience watches the scenes, they are involved, receiving a gentle touch as a gift, a reminder of being alive. Actors and spectators together can share the tenderness of a caress. The theatre is the world to experience. Touch is a hymn to life.

**Content warnings:** flashing lights, representation of fighting.

**Please note:** gentle physical touch and physical interaction will occur between the audience members and the performers. Consent to this will be marked by the audience choosing to wear a visible sticker. Consent can be withdrawn at any time by removing the sticker.

# RADA Supporters

Thank you to all those who donate in support of our training, our students, our creative and outreach programmes.

## **Major Supporters**

### **Academy Circle**

Charles Holloway OBE  
Anne Peck  
Anonymous

### **Presidents Circle**

Richard Bernstein  
Cecilia and Stuart Boyd  
Sir Kenneth Branagh  
Alan and Ros Haigh  
Tania Seary and Chris Lynch  
Satoko Yamaga Macdonald  
Anonymous

## **RADA Ensemble**

### **Empower Patrons**

Juan Corbella and Howard Pfabe  
Richard Lissack KC  
Robert Lister

### **Collaborate Patrons**

Zac and Lucy Barratt  
Rosalind Clayton and Martin Higginson  
Aidan Clegg  
Peter Davies  
Gemma Jones  
Gerald Kidd  
Maxine Peake  
John and Antonia Romeo  
Anonymous

### **Innovate Patrons**

Desmond and Madeleine Cohen  
Graham Downie  
Jennifer Hirsch  
Uche Mere  
Marcus Ryder  
Caroline Spicer  
David Warren  
Jill Whitehouse

We also thank our generous RADA Ensemble Amplify Patrons and Members, as well as those supporters who prefer to remain anonymous.

### **Corporate Donors**

Warner Bros. Discovery  
Crystal Amber

## **Industry Pathway Partners**

### **Enable**

Entedi  
Onsight  
Panasonic  
Neg Earth  
Warner Bros Discovery  
Sotheby's London

### **Evolve**

MDG  
Akta Photography  
Champagne Taittinger  
**Embrace**  
White Light Ltd  
Pearl & Dean  
Triple E Track systems

### **Create**

Ambersphere

### **Inspire**

Le Mark Group Ltd

### **In-Kind Partners**

Anna Valley Ltd  
Autograph Sound  
Cadac  
ETC  
Factory  
KV2 Audio  
Notch  
Panalux UK  
Projected Image  
Shure  
Signify Lighting  
TSL Lighting

### **Trusts and Foundations:**

The Austin and Hope Pilkington Trust  
Cockayne - Grants for the Arts: a donor advised fund held at The London Community Foundation  
The Behrens Foundation  
Backstage Trust  
The Black Heart Foundation  
CHK Foundation  
The Josephine Hart Poetry Foundation  
The Kirby Laing Foundation  
The Noël Coward Foundation  
The Sidney E Frank Foundation  
The Robert Gavron Charitable Trust

### **Laurence Isaacson Scholarship**

### **Michael Blakemore Scholarship**

### **Scholarship Fund**

The Boris Karloff Charitable Foundation  
The Carne Trust  
The Clothworkers' Foundation  
The John S Cohen Foundation  
The David Cunliffe Scholarship  
The Desmond Gill Memorial Award  
The D'Oyly Carte Charitable Trust  
The Gilbert and Eileen Edgar Foundation  
ITV Tony Warren Bursary  
The Josephine Hart Poetry Foundation  
The Laurence Olivier Bursary

The Leverhulme Trust  
The Lilian Baylis Award  
The Lionel Bart Charitable Foundation  
The Nick Lewis Memorial Trust  
The Rigby Foundation  
The Dame Rosemary Squire Bursary  
The Sir John Gielgud Charitable Trust Bursary  
Sophie's Silver Lining Fund  
The South Square Trust  
Trish Montemuro Bursary  
The Wall Trust  
The William and Frances Branagh Memorial Fund

### **In Memoriam**

Gifts made in honour of the following people:  
Michael Blakemore

### **Notified Legacies**

Charles Barton  
Marcus and Susie Bicknell  
Caroline Burt  
Philip Carne MBE  
Kenneth Cohen  
Sarah Cook  
Mike Cooper  
Craig Crosbie  
Sheila Dickinson  
Maureen Elton  
Sarah Evans  
Don Gaskell  
Guy Henry  
Richard Hicks  
Robin Houston  
David Hunt  
Nigel Pivaro  
Fiona Shaw CBE  
Joe Solomon  
Duncan Sparkes  
Felicity Trew  
Bruce Wall  
Camilla Whitworth-Jones  
And all those who wish to remain anonymous.

### **Realised Legacies**

Margaret Burkinshaw  
Renée Cooper  
Alastair Davidson  
Fenella Fielding  
Anthony Gardner  
Iris Evelyn Gillett  
James Hamilton  
Laurence Isaacson  
Robert Kaliban  
Charles Kay  
Sheila Manning  
Guy Pursey  
Ann Richardson  
Alan Rickman  
Griff Thomas  
Roma Cribbes Whitney

### **Awards in Perpetuity**

Constance Roberts  
Dame Irene Vanbrugh  
Debbie Cronshaw  
Eleanore Bryan  
Elizabeth Sebok (Lead Voice Tutor)  
Eunice Black  
The Friends of RADA  
Garth Wilton - dedicated to Ann Wilton  
Gillian Wilson  
John Thaw  
Jess Sleath  
Kate Dreyer Memorial  
Keely Donovan  
Keith Waterhouse  
Lady Pilkington  
Lionel Gamlin  
Lord and Lady Attenborough  
Marianne Pearce  
Mary Higgins  
Mary Morris  
Max Reinhardt  
Peter and Sheila Bennett  
Peter Barkworth  
RADA Associates  
The Rayne Foundation  
The Searle Scholarship  
St Clair Bayfield  
The Sylvia London Student Bursary  
WCRS Student Bursary

We would like to also thank those generous supporters who wish to remain anonymous.





### **Join RADA Ensemble**

Enjoy exclusive opportunities to get closer to our work. Your support helps us continue to train and nurture the next generation of creative talent. Join us at [rada.ac.uk/rada-ensemble](http://rada.ac.uk/rada-ensemble) or scan the QR code.

Registered Charity No. 312819

Patron: His Majesty King Charles III

 **RoyalAcademyOfDramaticArt**  
 **royalacademyofdramaticart**