

# RADA

Autumn 2, 2023  
Gielgud Theatre

# Picnic at Hanging Rock (2016)

by Joan Lindsay and Tom Wright

## Cast (in alphabetical order)

### Arielle

Lydia-May Cooney

### Amber

Caroline Elms

### Elizabeth

Caitlin McEwan

### Harriet

Ayesha Ostler

### Nikki

Sophia Razvi

## Creative Team

### Director

Joshua Roche

### Designer (set and costume)

Miriam Dheva-Aksorn

### Lighting Designer

Dominika Kosieradzka

### Sound Designer

John Leonard

### Movement

Mixalis Aristidou

### Voice and Dialect Coach

Kay Welch

### Fight Coach

Bret Yount

### Captioner

Jenny Skene



Scan the QR code to visit the  
actors' student profiles.

Content warnings: haze, strobe lighting, mentions  
of suicide, mentions of sexual assault, mild  
violence, racism and colonialism.

This amateur production is presented by  
arrangement with Nick Hern Books.

# Production Team

The students working on this production are on the FdA in Technical Theatre and Stage Management, the BA (Hons) in Technical Theatre and Stage Management and the PgDip in Theatre Costume.

## Production Manager

Ruby Elms  
Anthony Sammut (staff)

## Technical Manager

Ruby Elms  
Jonathan Hill (staff)

## Stage Manager

Lucy Prince

## Deputy Stage Manager

Katie Glassbrook

## ASM2

Amelia Barrett

## Production Electrician

Sonny Trickey

## Lighting Programmer

Dominika Kosieradzka

## Lighting Operators

Shannon Jenkins  
Eliana Levi

## Lighting Crew

Tomer Calfon  
Tom Hall  
Shannon Jenkins  
Eliana Levi  
ZhiYi Liu

## Production Sound Engineer

Sylvia Wan

## Sound Chief / RF Coordinator

Ben Davidson

## Sound No 3 / RF / Sound Operator

Summer Randall

## Sound Crew

Isaac Datson  
Ana Lucia Emiliani  
Siena Godfrey  
Ruth Kogelmann  
Ryan Liu  
Summer Randall

## Costume Supervisor

Vari Pritchard (staff)

## Wardrobe Assistants

Laura Conroy  
Marine Weiss

## Dressers

Tsukasa Akai  
Tyler Dayani

## Wigs, Hair and Make-Up Supervisor

Keisha Banya (staff)

## Scenic Art

### Head of Department

Grace Farrow-Moore

### Scenic Art Assistants

Tsukasa Akai  
Jonathan Armitage  
India Fisher  
Georgina McCartney  
Carmen Page

## Construction

### Head of Department

Alice Gibson

### Scenery Builders

Zelfa el Kazen  
Will Hamilton

## Construction Crew

Danielle Adams  
Charlotte Bertram  
Mareth Burns  
Tyler Dayani  
Nathan Quraishi Holt

## Prop Makers

Rosemary Fleming  
Martin Wright

## Props Assistant

Amelia Barrett

As *Picnic at Hanging Rock* is set in Australia, we would like to make the following Acknowledgement of Country: Along with Reconciliation Australia, RADA acknowledges Traditional Owners of Country throughout Australia and recognises the continuing connection to lands, waters and communities. We pay our respect to Aboriginal and Torres Strait Islander cultures; and to Elders past and present.

For more information please visit the following websites:



[www.bbc.co.uk/iplayer/episodes/pogjffbz/the-australian-wars](http://www.bbc.co.uk/iplayer/episodes/pogjffbz/the-australian-wars)



[en.m.wikipedia.org/wiki/Kulin\\_nation](http://en.m.wikipedia.org/wiki/Kulin_nation)



[m.facebook.com/mirandamustgo/](https://m.facebook.com/mirandamustgo/)



Scan the QR code to visit the Technical Theatre Arts student profiles.

# Biographies

## **Joan Lindsay Writer**

Joan Lindsay was an Australian novelist, playwright and visual artist. She studied at the National Gallery of Victoria Art School in Melbourne and exhibited her paintings throughout her life. Her first novel (published under a pseudonym) was *Through Darkest Ponderay*. It was not until 30 years later that her second novel, *Time Without Clocks*, was published. In 1967, her most wellknown work, *Picnic at Hanging Rock*, was published to critical acclaim and is considered one of the most important Australian novels.

## **Tom Wright Adaptor**

Tom Wright was born and educated in Melbourne. He was a member of Barrie Kosky's Gilgul Theatre in the 1990's and was Associate Director of Sydney Theatre Company from 2004 until 2012. His plays or adaptations include: *A Journal of the Plague Year*, *The Caucasian Chalk Circle*, *Ubu*, *This is a True Story*, *Lorilei*, *Babes in the Wood*, *Tense Dave*, *The Odyssey*, *The Lost Echo*, *Criminology* (with Lally Katz), *Tales from the Vienna Woods*, *The Women of Troy*, *The War of the Roses*, *The Duel*, *Baal*, *Optimism*, *Oresteia*, *On the Misconception of Oedipus*, *The Histrionic* and *Black Diggers*.

## **Joshua Roche Director**

Josh Roche is a multi-award winning theatre director, living and working in London. He is the winner of the JMK award, 2017, and this year was named one of the Edinburgh Fringe 5 by the Stage, alongside Flawbored. Theatre includes *It's a Motherf\*\*king Pleasure* by Flawbored and Josh Roche (Untapped Award Winner, Soho Theatre, Underbelly, SoHo Playhouse, New York), *Home* by David Storey (Chichester Festival Theatre), *My Name is Rachel Corrie* (JMK Award Winner, Young Vic), *Pressure* by David Haig (Royal Alexandra, Toronto) *Orlando* (59E59 New York) and *Pennyroyal* (Finborough Theatre) by Lucy Roslyn, *Radio* by Al Smith (Audible UK @ Arcola), *Resurrecting Bobby Aul* by Brian Catling (BBC Arts & Avalon), *No Particular Order* by Joel Tan (Ellandar @ Theatre 503), *Winky* by George Saunders (Soho Theatre), World Shakespeare Congress, *The Prince Charles Hamlet Sketch* (RSC), *Plastic* by Kenny Emson (Old Red Lion). Upcoming work includes *The Forsyte Saga* for Troupe at the Park Theatre in Autumn of 2024, and a soon to be announced project with Manchester Royal Exchange. Josh is the co-founder of OpenHire, the campaign for fair hiring that provides free job advertisements for freelance creatives every week.

## **Miriam Dheva-Aksorn Designer (set and costume)**

Miriam Dheva-Aksorn is in her second year of RADA's Foundation Degree in Technical Theatre and Stage Management specialising in design and stage management. Before coming to RADA, Miriam studied in Design and Architecture at Chulalongkorn University, where she designed and directed for Bangkok Design Week and TED x Pathumwan. Previous roles at RADA include costume supervisor on *The Cherry Orchard*, ASM2 on *Company*, Scenic artist and dresser on *The Effect*. This is her first set and costume design role at RADA.

## **Dominika Kosieradzka Lighting Designer**

Dominika Kosieradzka is in her third year of the BA (Hons) in Technical Theatre and Stage Management specialising in lighting. Previous credits at RADA include, *Love and Information* as Lighting Programmer, and *The Motherf\*\*\*er with the Hat* as Lighting Programmer. This is her first lighting design at RADA and she has been thrilled to work alongside such a great company.

## **John Leonard Sound Designer**

John started work in theatre sound many years ago and during that time he has provided soundtracks for theatres all over the world, written an acclaimed guide to theatre sound, won various awards and published several collections of sound effects. He is a Fellow of The Guildhall School of Music & Drama, an Honorary Fellow of The Hong Kong Academy for Performing Arts, a Companion of The Liverpool Institute for Performing Arts, a member of the Audio Engineering Society, the Institute For Professional Sound, the Association Of Sound Designers (UK) and the Theatrical Sound Designers and Composers Association. (USA)

Most recent theatre: *Farm Hall* (Jermyn Street Theatre, Bath Theatre Royal & UK Tour); *To Have and To Hold*, *'Night, Mother*, *Wolf Cub*, (Hampstead Theatre), *Voyage Round My Father*, The Dresser (Bath Theatre Royal & UK Tour), *Blithe Spirit* (Bath Theatre Royal, UK tour and West-End), *My Name Is Lucy Barton* (Bridge Theatre, London and New York), *Prism* (Hampstead Theatre & UK Tour); *All My Children* (Jermyn Street Theatre), *Uncle Vanya* (Bath Theatre Royal); *4000 Miles & 8 Hotels* (Chichester Minerva Theatre) *Long Day's Journey Into Night* (Bristol Old Vic, West End, New York and Los Angeles).

# RADA Supporters

Thank you to all those who donate in support of our training, our students, our creative and outreach programmes.

## Principal Partner

Warner Bros. Discovery

## President's Circle

Sir Kenneth Branagh  
Aidan Clegg  
Alan and Ros Haigh  
Tina and Martin Hughes  
Satoko Yamaga Macdonald  
Sir Stephen Waley-Cohen Bt  
And all those who wish to remain anonymous.

## Benefactors

Zac and Lucy Barratt  
Victor and Giulia Loewy  
John and Antonia Romeo  
Tanya Rose  
David Kaskel and Chris Teano  
Geraldine Winner

## Platinum Patron

Danny Clifford  
Will and Jo Davies  
Paul and Gill Kendrick  
Richard Lissack KC  
Andrew and Shirley Sutch  
The Lynen Family  
David and Carole Warren

## Starring Role

Russ and Linda Carr  
Peter Davies  
Wendy Jardine  
Gemma Jones  
Robert Lister  
Jill Whitehouse  
Peter Williams

We would like to acknowledge the kind support of our RADA Leading Role, Supporting Role, Ensemble and Audience members.

## Corporate partners

### Platinum partners

Shure  
Autograph Sound  
ROBE Lighting

### Gold partners

Anna Valley Ltd  
KV2 Audio  
Notch  
Santander Universities UK  
White Light Ltd

### Silver partners

Cadac  
MDG  
Panalux UK  
Quintessentially  
Zero 88

## Bronze partners

Ambersphere  
Avolites  
Champagne Taittinger  
ETC  
Factory  
Neg Earth  
PRG UK  
Projected Image  
Swarovski  
TSL Lighting  
Triple E

## Event partners

AXA XL  
Pearl and Dean  
Sotheby's London

## Stage Critical

### Lead Supporters

The Utley Foundation  
Satoko Yamaga Macdonald

### Major Supporters

CHK Foundation  
The Carne Trust  
Honeymead Arts Trust  
The William and Katharine Longman Charitable Trust  
Anne Peck / The Schwab Fund

### Supporters

Marie Barone  
Sir Peter Bazalgette  
Will and Jo Davies  
Eon Productions  
Ros and Alan Haigh  
Ian and Beth Mills  
Maggie and Peter Murray-Smith  
Sotheby's  
Patrick and Anna Thomson  
The Sylvia Waddilove Foundation  
The William and Frances Branagh Memorial Fund  
Geraldine Winner

And all those who wish to remain anonymous.

We would also like to thank everyone who supported Stage Critical through our Big Give Christmas Challenge 2023 campaign.

### Trusts and Foundations

The Behrens Foundation  
The Reed Foundation  
The Sidney E Frank Foundation  
The Utley Foundation  
Watson Foundation

### Laurence Isaacson Scholarship

## Scholarship Fund

Anne Peck  
ASRADA  
The Amy Mitcheson Fund  
The Boris Karloff Foundation  
The Carne Trust  
The Charles Michael Holloway Charitable Trust  
The Clothworkers' Foundation  
The John S Cohen Foundation  
The Desmond Gill Memorial Award  
The D'Oyly Carte Charitable Trust  
The Gilbert and Eileen Edgar Foundation  
The Grahame Norris Memorial Fund  
The Harold Hyam Wingate Foundation  
The Sir John Gielgud Charitable Trust Bursary  
The Josephine Hart Poetry Foundation  
The Laurence Olivier Award  
The Leverhulme Trust  
The Lilian Baylis Award  
The Lionel Bart Foundation  
Trish Montemuro Bursary  
The Rayne Foundation  
Santander Universities UK  
Sophie's Silver Lining Fund  
The South Square Trust  
The Stanley Picker Charitable Trust  
The Thistle Trust  
The Wall Trust  
Warner Bros. Discovery  
The William and Frances Branagh Memorial Fund

### Legacy Pledgers

Charles Barton  
Marcus and Susie Bicknell  
Philip Carne MBE  
Kenneth Cohen  
Sarah Cook  
Mike Cooper  
Craig Crosbie  
Alastair Davidson  
Sheila Dickinson  
Maureen Elton  
Sarah Evans  
Anthony Gardner  
Don Gaskell  
Stephen Greif  
Guy Henry  
Richard Hicks  
Robin Houston  
David Hunt  
Vivian Munn  
Nigel Pivaro  
Fiona Shaw CBE  
Michael Simkins  
John St Brioc Hooper  
Felicity Trew  
Bruce Wall  
Camilla Whitworth-Jones  
Anonymous

## Legacy Supporters

Margaret Burkinshaw  
Renée Cooper  
Alastair Davidson  
Fenella Fielding  
Iris Evelyn Gillett  
James Hamilton  
Laurence Isaacson  
Robert Kaliban  
Sheila Manning  
Guy Pursey  
Ann Richardson  
Alan Rickman  
Griff Thomas

## Awards in Perpetuity

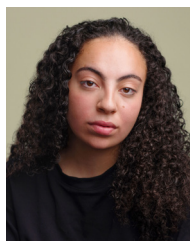
Constance Roberts  
Dame Irene Vanbrugh  
Debbie Cronshaw  
Eleanore Bryan  
Elizabeth Sebok (Lead Voice Tutor)  
Eunice Black  
The Friends of RADA  
Garth Wilton - dedicated to Ann Wilton  
Gillian Wilson  
John Thaw  
Jess Sleath  
Kate Dreyer Memorial  
Keely Donovan  
Keith Waterhouse  
Lady Pilkington  
Lionel Gamlin  
Lord and Lady Attenborough  
Marianne Pearce  
Mary Higgins  
Mary Morris  
Max Reinhardt  
Peter and Sheila Bennett  
Peter Barkworth  
RADA Associates  
The Rayne Foundation  
The Searle Scholarship  
Sir John Gielgud Bursary  
St Clair Bayfield  
The Sylvia London Student Bursary  
WCRS Student Bursary



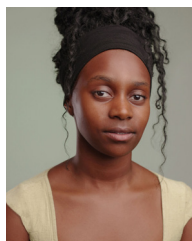
## BA (Hons) in Acting



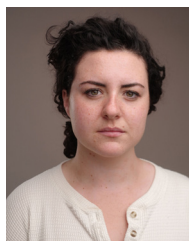
Jack  
Ambrose



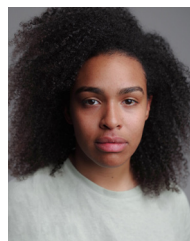
Bella  
Aubin



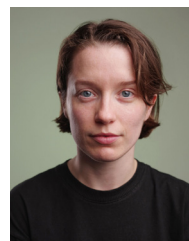
Tamsin  
Benn



Lydia-May  
Cooney



Joanie  
Diamond



Caroline  
Elms



Millie  
Faraway



Misheck Albert  
Freeman



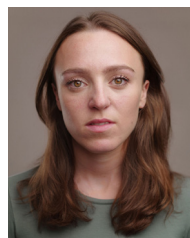
Chengxi  
Fu



Shakeel  
Haakim



Alfie  
Jallow



Julia  
Kass



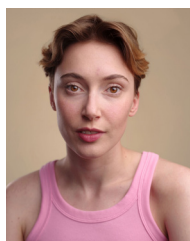
Tom  
Lyons



Freddie  
MacBruce



Caitlin  
McEwan



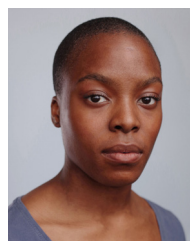
Sidonie  
McLaren



Lewis  
Merrylees



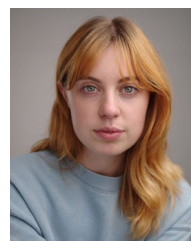
Reece  
Miller



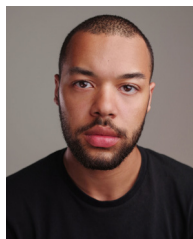
Keriola  
Mosuro



Rachel  
O'Connell



Ayesha  
Ostler



Miles  
Paloma



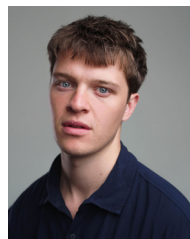
Sophia  
Razvi



Jonathan  
Rubin



Emma  
Symmonds





Jasper  
Talbot



Fred  
Woodley Evans

 @RADA\_London

 RoyalAcademyOfDramaticArt

 royalacademyofdramaticart

 RADA\_London

[rada.ac.uk](http://rada.ac.uk)

Patron: Her Late Majesty The Queen

Registered charity no. 312819

Headshots by Akta, [aktaphotography.com](http://aktaphotography.com)



### Become a member

Become a RADA member and enjoy exclusive opportunities to get closer to our work. Your support helps us continue to train and nurture the next generation of creative talent. Join us at [rada.ac.uk/membership](http://rada.ac.uk/membership) or scan the QR code.